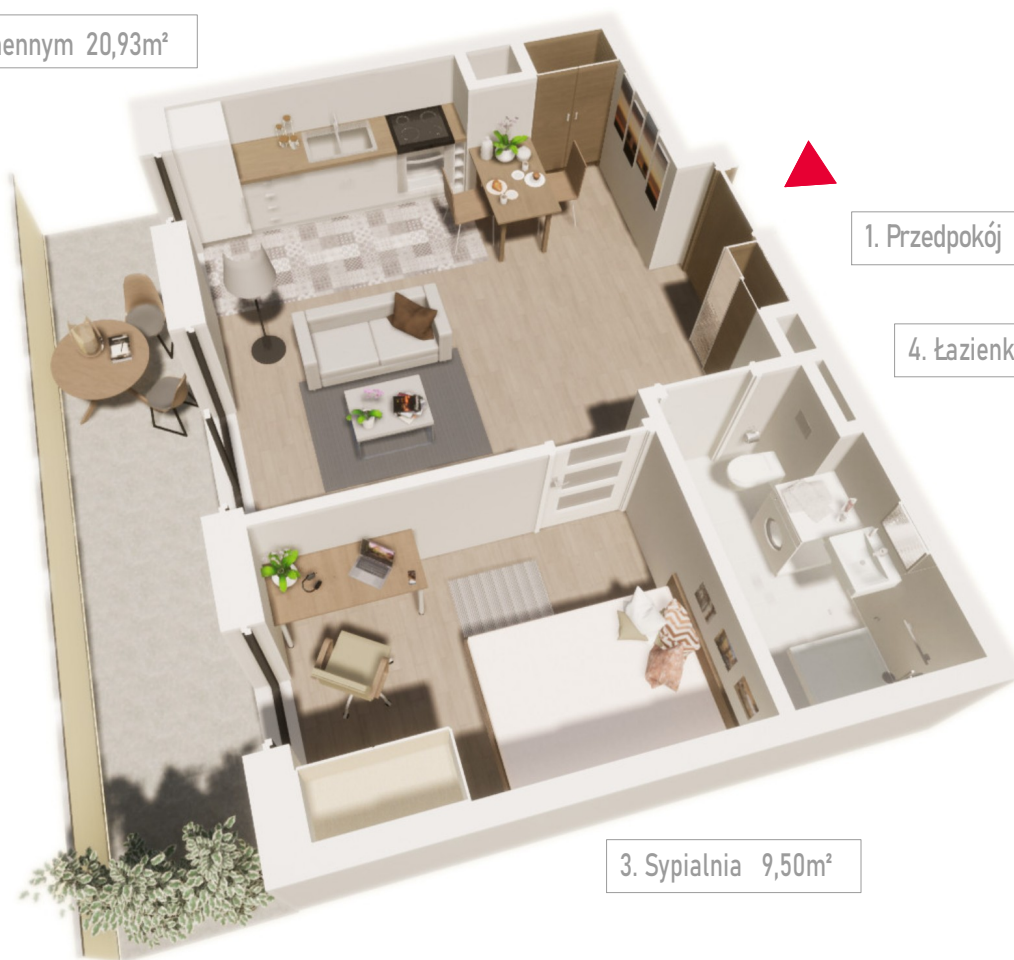


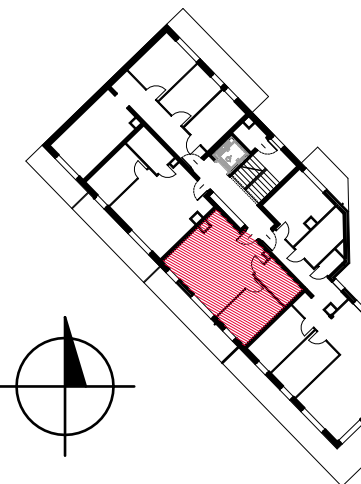
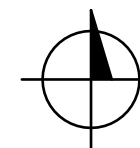
2. Pokój z aneksem kuchennym 20,93m²



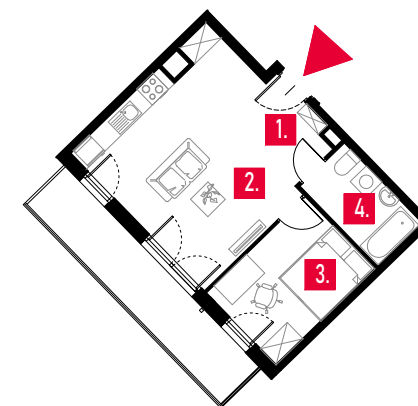
1. Przedpokój 4,08m²

4. Łazienka 4,73m²

3. Sypialnia 9,50m²



Rzut lokalu



NR	POMIESZCZENIE	POW.
1.	PRZEDPOKÓJ	4,08m ²
2.	SALON Z ANEKSEM	20,93m ²
3.	SYPIALNIA	9,50m ²
4.	ŁAZIENKA	4,73m ²
SUMA		39,24m ²
BALKON		10,91m ²